



# PACIFIC MARINE & INDUSTRIAL

## MANUFACTURING ◊ DISTRIBUTION ◊ SERVICE

**P3490B - AIRCRAFT SECURING POINT**

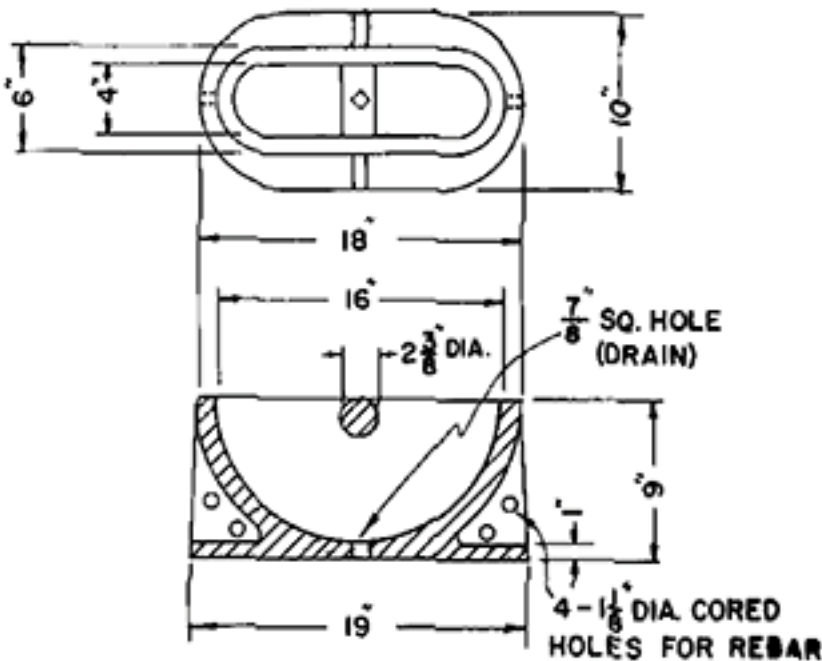
**CUT SHEET**



**Part: P3490B**  
Aircraft Tie Down  
For Concrete Installation

**Capacity:**  
200,000 lbs.

**Material:**  
Ductile Cast Iron ASTM A-536



**Dimensions:**

Overall Height:  
9 Inch (228.6mm)  
Bottom Stake Holes:  
7/8 x 7/8 Inch (22.2mm)  
Rebar Holes On Sides:  
1 1/8 Inch (28.5mm)



**Installation Tips on Next Page**



**Quality Pacific Manufacturing, Inc., P.O. Box 70520 Richmond, CA, USA 94807**

**510-233-2310**

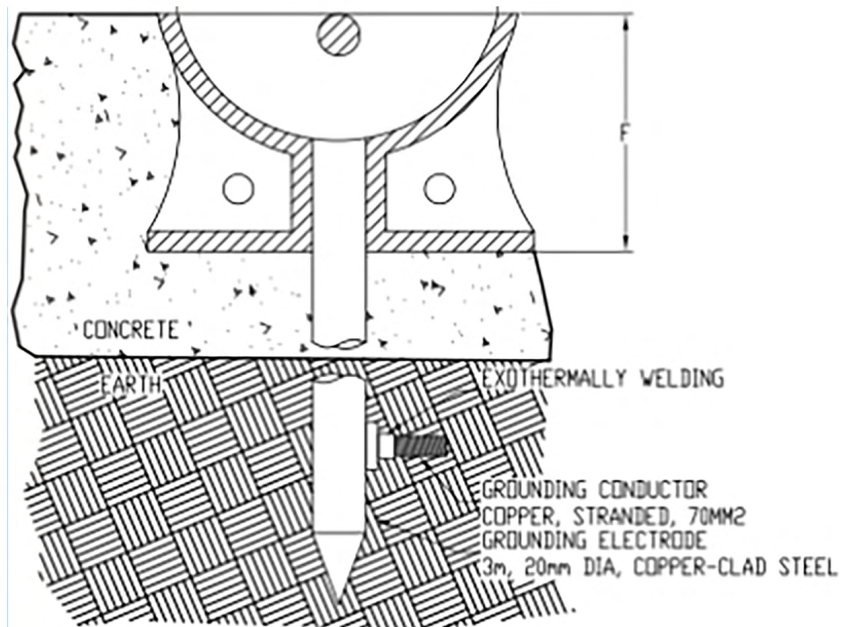
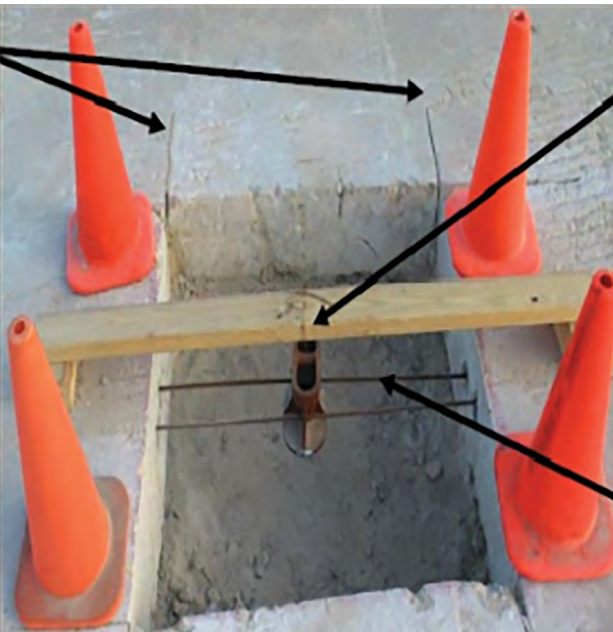
**www.pacificmarine.net**

**info@pacificmarine.net**

Copyright © Quality Pacific Manufacturing, Inc.

# Installation Tips

Fill mooring point with sand to keep concrete out during pour. 6,000 psi concrete is recommended. Side rebar holes can be utilized per the direction of the project engineer. Bottom square hole can be used with a stake to bring the mooring point to grade or it can be used to install a grounding rod. It is square to keep the mooring point from displacing during the pour. The mooring point can also be pressed in after the pour.



**PACIFIC MARINE & INDUSTRIAL**

510-233-2310

[www.pacificmarine.net](http://www.pacificmarine.net)

[info@pacificmarine.net](mailto:info@pacificmarine.net)