

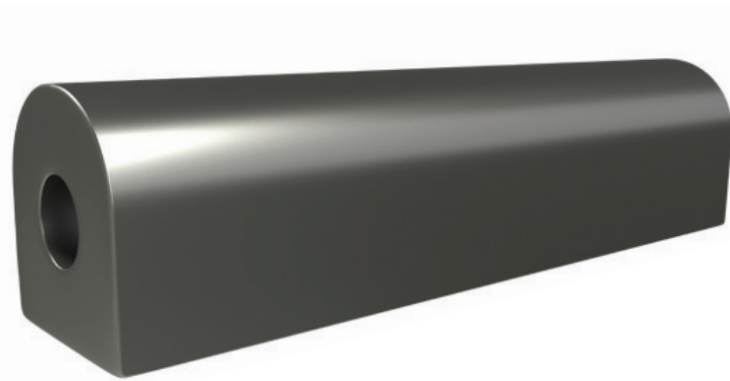


PACIFIC MARINE & INDUSTRIAL

MANUFACTURING ◊ DISTRIBUTION ◊ SERVICE

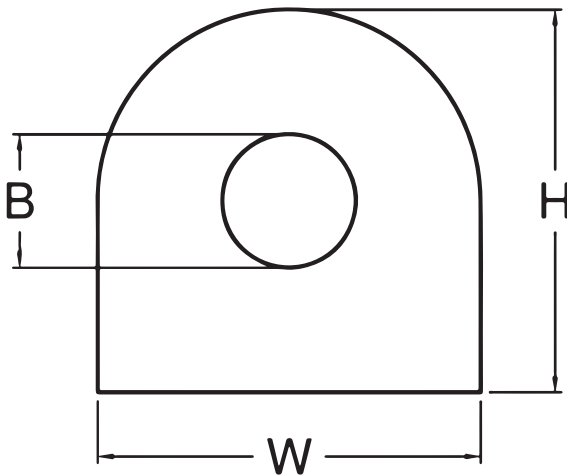
EXTRUDED RUBBER FENDERS

DO SERIES: D SHAPE WITH O BORE



FENDER FEATURES

- ✦ Cross Section Sizes Per Chart Below
- ✦ Cut to Length As Desired
- ✦ Max Length: 20 Feet in Most Cases
- ✦ Pre Drilled Mounting Holes if Desired
- ✦ Pre Curved to Match Radius if Desired
- ✦ High Quality Black or Non Marking Grey EPDM
- ✦ Standard Hardness of 75 Durometer
- ✦ Custom Material And Cross Sections Available



Part Number	Width W	Height H	Bore B
DO-4-4-2	4	4	2
DO-5-6-2 1/2	5	6	2 1/2
DO-6-6-3	6	6	3
DO-8-8-3	8	8	3
DO-8-10-3	8	10	3
DO-9-10-3	9	10	3
DO-10-10-3	10	10	3
DO-10-10-4	10	10	4
DO-12-12-4	12	12	4
DO-12-12-5	12	12	5
DO-12-14-5	12	14	5
DO-12-14-4	12	14	4
DO-14-14-6	14	14	6
DO-14-12-6	14	12	6
DO-13-12-6	13	12	6
DO-16-16-8	16	16	8
DO-18-18-9	18	18	9
DO-20-20-10	20	20	10
DO-22-22-11	22	22	11

All Measurements in Inches

Quality Pacific Manufacturing, Inc., P.O. Box 70520 Richmond, CA, USA 94807

☎ 510-233-2310

🌐 www.pacificmarine.net

✉ info@pacificmarine.net

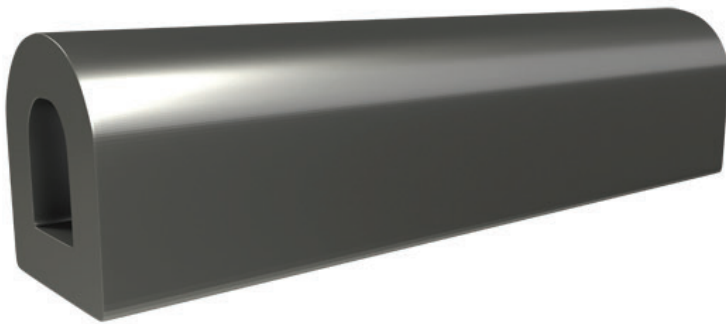


PACIFIC MARINE & INDUSTRIAL

MANUFACTURING \diamond DISTRIBUTION \diamond SERVICE

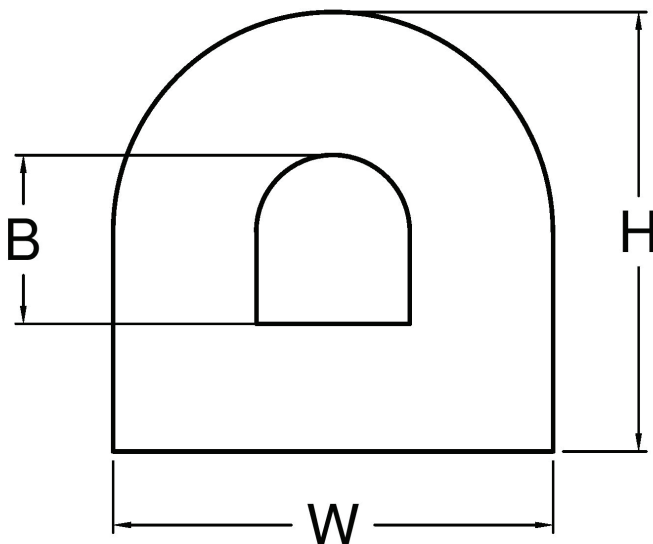
EXTRUDED RUBBER FENDERS

DD SERIES - D SHAPE WITH D BORE



FENDER FEATURES

- ✦ Cross Section Sizes Per Chart Below
- ✦ Cut To Length as Desired
- ✦ Maximum Length: 20 Feet in Most Cases
- ✦ Pre Drilled Mounting Holes if Desired
- ✦ Pre Curved to Match Radius if Desired
- ✦ High Quality Black or Non Marking Grey EPDM
- ✦ Standard Hardness of 75 Durometer
- ✦ Custom Materials and Cross Sections Available



Part Number	Width W	Height H	Bore B
DD-2-2-11	2	2	1x1
DD-4-4-22	4	4	2 x 2
DD-6-6-33	6	6	3 x 3
DD-8-8-44	8	8	4 x 4
DD-10-10-55	10	10	5 x 5
DD-12-12-66	12	12	6 x 6
DD-14-14-77	14	14	7 x 7
DD-16-16-88	16	16	8 x 8
DD-18-18-99	18	18	9 x 9
DD-20-20-1010	20	20	10 x 10

All Measurements in Inches

Quality Pacific Manufacturing, Inc., P.O. Box 70520 Richmond, CA, USA 94807

☎ 510-233-2310

🌐 www.pacificmarine.net

✉ info@pacificmarine.net

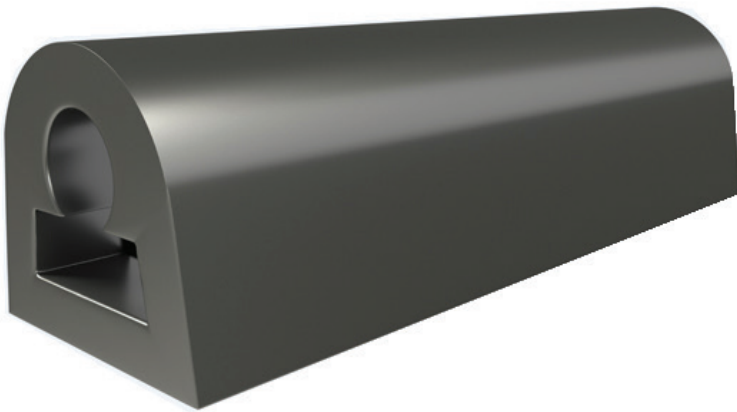


PACIFIC MARINE & INDUSTRIAL

MANUFACTURING ◊ DISTRIBUTION ◊ SERVICE

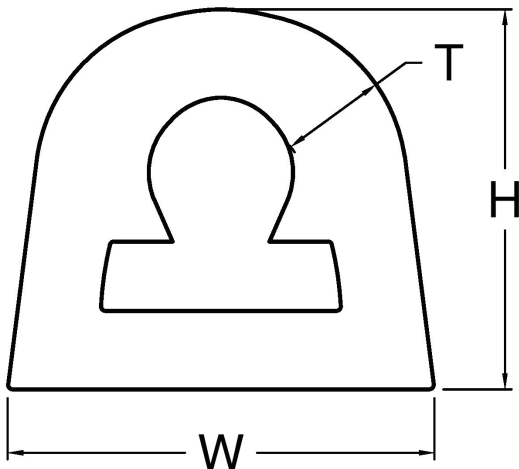
EXTRUDED RUBBER FENDERS

TDK SERIES - D WITH KEY BORE



FENDER FEATURES

- ✦ Cross Section Sizes Per Chart Below
- ✦ Cut To Length as Desired
- ✦ Maximum Length: 20 Feet in Most Cases
- ✦ Pre Drilled Mounting Holes if Desired
- ✦ Pre Curved to Match Radius if Desired
- ✦ High Quality Black or Non Marking Grey EPDM
- ✦ Standard Hardness of 75 Durometer
- ✦ Custom Materials and Cross Sections Available



Part Number	Width W	Height H	Thickness T
TDK-22	2 1/8	2	1/2
TDK-33	3 1/8	2 7/8	2/3
TDK-44	4 1/4	3 7/8	3/4

All Measurements in Inches

Quality Pacific Manufacturing, Inc., P.O. Box 70520 Richmond, CA, USA 94807

☎ 510-233-2310

🌐 www.pacificmarine.net

✉ info@pacificmarine.net

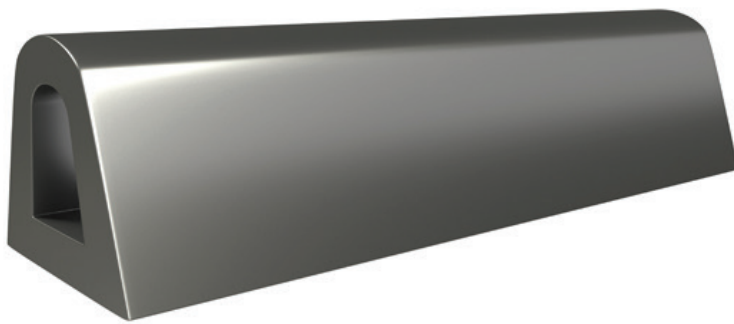


PACIFIC MARINE & INDUSTRIAL

MANUFACTURING ♦ DISTRIBUTION ♦ SERVICE

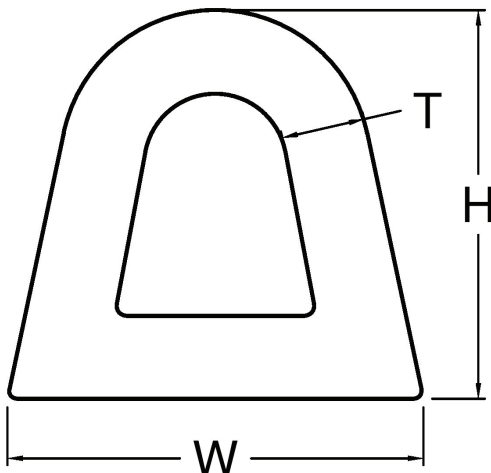
EXTRUDED RUBBER FENDERS

TDD SERIES - TAPERED D WITH D BORE



FENDER FEATURES

- ✦ Cross Section Sizes Per Chart Below
- ✦ Cut To Length as Desired
- ✦ Maximum Length: 20 Feet in Most Cases
- ✦ Pre Drilled Mounting Holes if Desired
- ✦ Pre Curved to Match Radius if Desired
- ✦ High Quality Black or Non Marking Grey EPDM
- ✦ Standard Hardness of 75 Durometer
- ✦ Custom Materials and Cross Sections Available



Part Number	Width W	Height H	Thickness T
TDD-22	2 1/4	2	1/2
TDD-44	4 1/4	3 7/8	3/4
TDD-44-1	4 1/2	3 3/4	3/4
TDD-66	6 3/4	6	1 1/2
TDD-98	9 1/2	8	1 1/2

All Measurements in Inches

Quality Pacific Manufacturing, Inc., P.O. Box 70520 Richmond, CA, USA 94807

☎ 510-233-2310

🌐 www.pacificmarine.net

✉ info@pacificmarine.net

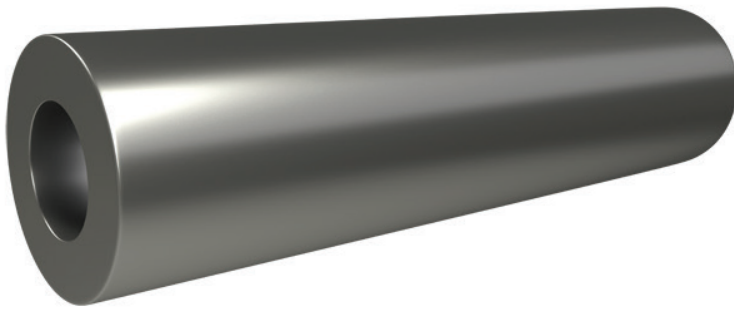


PACIFIC MARINE & INDUSTRIAL

MANUFACTURING ◊ DISTRIBUTION ◊ SERVICE

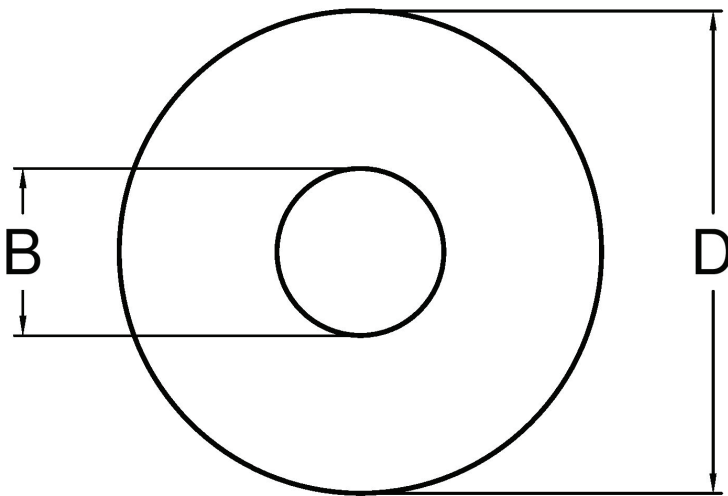
EXTRUDED RUBBER FENDERS

OO SERIES - CYLINDRICAL WITH O BORE



FENDER FEATURES

- ✦ Cross Section Sizes Per Chart Below
- ✦ Cut To Length as Desired
- ✦ Maximum Length: 20 Feet in Most Cases
- ✦ Pre Drilled Mounting Holes if Desired
- ✦ Pre Curved to Match Radius if Desired
- ✦ High Quality Black or Non Marking Grey EPDM
- ✦ Standard Hardness of 75 Durometer
- ✦ Custom Materials and Cross Sections Available



Part Number	Diameter D	Bore B
OO-3-1	3	1
OO-3-1.5	3	1 1/2
OO-5-2.5	5	2 1/2
OO-7-3	7	3
OO-7-3.5	7	3 1/2
OO-7-5	7	5
OO-8-4	8	4
OO-10-5	10	5
OO-12-6	12	6
OO-15-7.5	15	7 1/2
OO-16-8	16	8

All Measurements in Inches

Quality Pacific Manufacturing, Inc., P.O. Box 70520 Richmond, CA, USA 94807

☎ 510-233-2310

🌐 www.pacificmarine.net

✉ info@pacificmarine.net

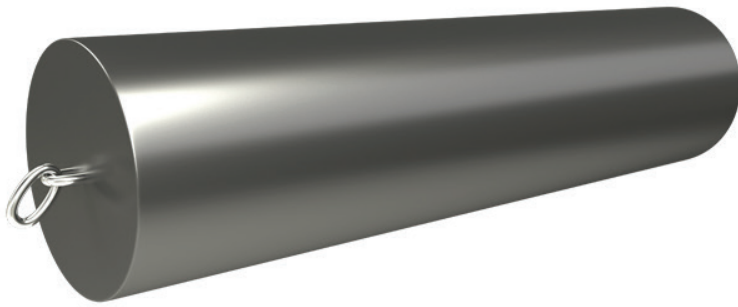


PACIFIC MARINE & INDUSTRIAL

MANUFACTURING ◊ DISTRIBUTION ◊ SERVICE

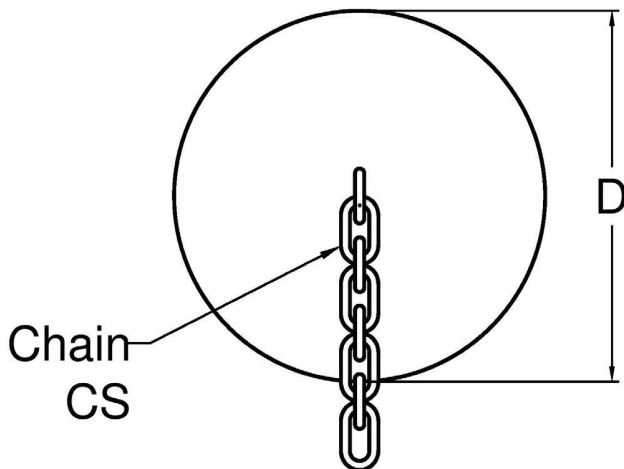
EXTRUDED RUBBER FENDERS

OC SERIES - CYLINDRICAL WITH CHAIN



FENDER FEATURES

- ✦ Cross Section Sizes Per Chart Below
- ✦ Cut To Length as Desired
- ✦ Maximum Length: 20 Feet in Most Cases
- ✦ Pre Drilled Mounting Holes if Desired
- ✦ Pre Curved to Match Radius if Desired
- ✦ High Quality Black or Non Marking Grey EPDM
- ✦ Standard Hardness of 75 Durometer
- ✦ Custom Materials and Cross Sections Available



Part Number	Diameter D	Chain Size CS	Proof Coil Chain Load Limit	Alloy Chain Load Limit
OC-5	5	1/3	1750 Lbs	4250 Lbs
OC-6	6	3/8	2450 Lbs	6600 Lbs
OC-7	7	1/2	4250 Lbs	11250 Lbs
OC-8	8	5/8	6375 Lbs	16500 Lbs
OC-9	9	5/8	6376 Lbs	16500 Lbs
OC-10	10	3/4	9125 Lbs	23000 Lbs
OC-11	11	3/4	9125 Lbs	23000 Lbs
OC-12	12	1	12400 Lbs	38750 Lbs

All Measurements in Inches

Quality Pacific Manufacturing, Inc., P.O. Box 70520 Richmond, CA, USA 94807



510-233-2310



www.pacificmarine.net



info@pacificmarine.net

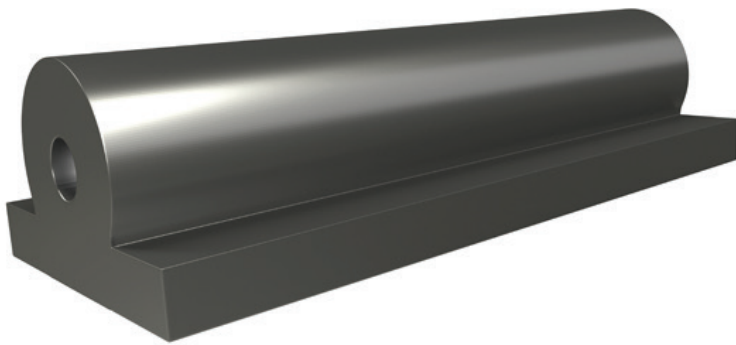


PACIFIC MARINE & INDUSTRIAL

MANUFACTURING ◊ DISTRIBUTION ◊ SERVICE

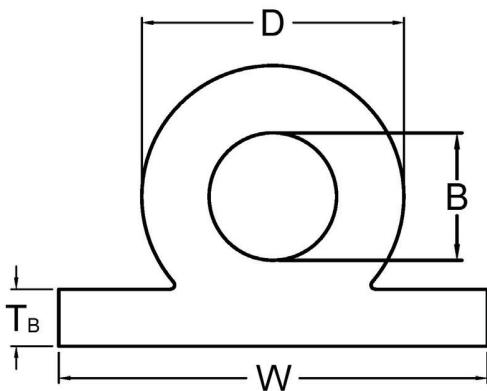
EXTRUDED RUBBER FENDERS

WO SERIES - WING TYPE WITH O BORE



FENDER FEATURES

- ✦ Cross Section Sizes Per Chart Below
- ✦ Cut To Length as Desired
- ✦ Maximum Length: 20 Feet in Most Cases
- ✦ Pre Drilled Mounting Holes if Desired
- ✦ Pre Curved to Match Radius if Desired
- ✦ High Quality Black or Non Marking Grey EPDM
- ✦ Standard Hardness of 75 Durometer
- ✦ Custom Materials and Cross Sections Available



Part Number	Width W	Diameter D	Bore B	Thickness Base TB
WO-4-2.5-1	4	2 1/2	1	1/4
WO-5-2.5-1	5	2 1/2	1	1/4
WO-6-3-1	6	3	1	3/4
WO-6.5-4-2	6 1/2	4	2	1
WO-6.5-4-1	6 1/2	4	1	1
WO-9-6-3	9	6	3	1 1/2
WO-9-6-2	9	6	2	1 1/2
WO-9.5-6-2	9 1/2	6	2	1 1/2
WO-12-8-4	12	8	4	2
WO-16-10-4	16	10	4	2 1/2
WO-18-12-6	18	12	6	3

All Measurements in Inches

Quality Pacific Manufacturing, Inc., P.O. Box 70520 Richmond, CA, USA 94807

☎ 510-233-2310

🌐 www.pacificmarine.net

✉ info@pacificmarine.net

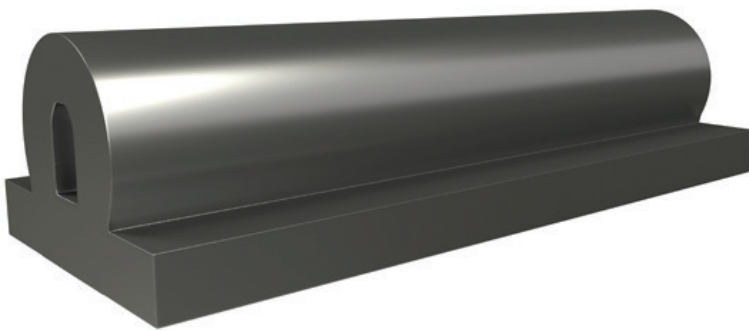


PACIFIC MARINE & INDUSTRIAL

MANUFACTURING ◊ DISTRIBUTION ◊ SERVICE

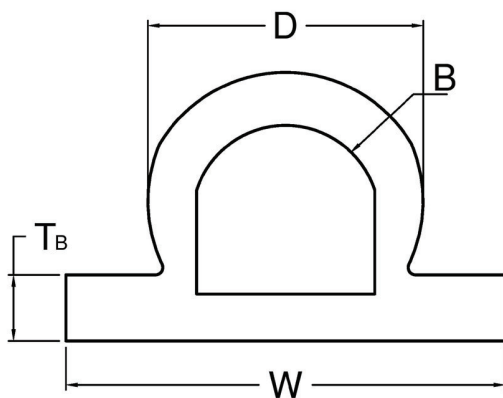
EXTRUDED RUBBER FENDERS

WD SERIES - WING TYPE WITH D BORE



FENDER FEATURES

- ✦ Cross Section Sizes Per Chart Below
- ✦ Cut To Length as Desired
- ✦ Maximum Length: 20 Feet in Most Cases
- ✦ Pre Drilled Mounting Holes if Desired
- ✦ Pre Curved to Match Radius if Desired
- ✦ High Quality Black or Non Marking Grey EPDM
- ✦ Standard Hardness of 75 Durometer
- ✦ Custom Materials and Cross Sections Available



Part Number	Width W	Diameter D	Bore B	Thickness Base T _B
WD-6-3-11	6	3	1x1	3/4
WD-6.5-4-22	6 1/2	4	2x2	1
WD-6.5-4-11	6 1/2	4	1x1	1
WD-9.5-6-22	9 1/2	6	2x2	1 1/2
WD-9-6-33	9	6	3x3	1 1/2
WD-9.5-6-44	9 1/2	6	4x4	1 1/2
WD-12-8-44	12	8	4x4	2
WD-16-10-33	16	10	3x3	2 1/2
WD-16-10-44	16	10	4x4	2 1/2
WD-18-12-66	18	12	6x6	3

All Measurements in Inches

Quality Pacific Manufacturing, Inc., P.O. Box 70520 Richmond, CA, USA 94807

☎ 510-233-2310

🌐 www.pacificmarine.net

✉ info@pacificmarine.net

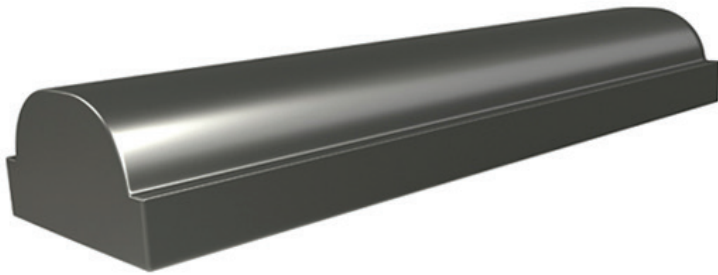


PACIFIC MARINE & INDUSTRIAL

MANUFACTURING ◊ DISTRIBUTION ◊ SERVICE

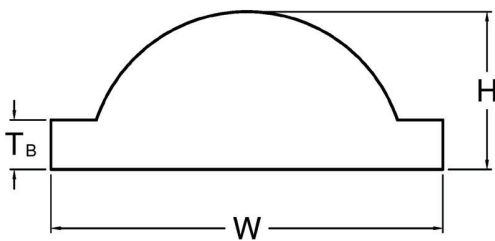
EXTRUDED RUBBER FENDERS

WN SERIES - WING WITH NO BORE



FENDER FEATURES

- ✦ Cross Section Sizes Per Chart Below
- ✦ Cut To Length as Desired
- ✦ Maximum Length: 20 Feet in Most Cases
- ✦ Pre Drilled Mounting Holes if Desired
- ✦ Pre Curved to Match Radius if Desired
- ✦ High Quality Black or Non Marking Grey EPDM
- ✦ Standard Hardness of 75 Durometer
- ✦ Custom Materials and Cross Sections Available



Part Number	Width W	Height H	Thickness Base T _B
WN-10-4	10	4	1 1/4

All Measurements in Inches

Quality Pacific Manufacturing, Inc., P.O. Box 70520 Richmond, CA, USA 94807

☎ 510-233-2310

🌐 www.pacificmarine.net

✉ info@pacificmarine.net



PACIFIC MARINE & INDUSTRIAL

MANUFACTURING ◊ DISTRIBUTION ◊ SERVICE

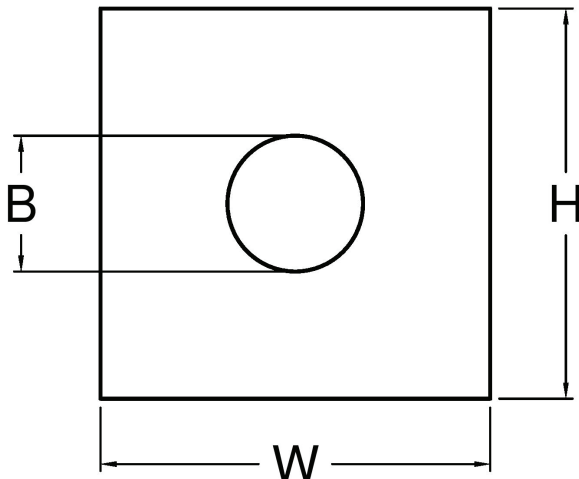
EXTRUDED RUBBER FENDERS

SO SERIES - SQUARE WITH O BORE



FENDER FEATURES

- ✦ Cross Section Sizes Per Chart Below
- ✦ Cut To Length as Desired
- ✦ Maximum Length: 20 Feet in Most Cases
- ✦ Pre Drilled Mounting Holes if Desired
- ✦ Pre Curved to Match Radius if Desired
- ✦ High Quality Black or Non Marking Grey EPDM
- ✦ Standard Hardness of 75 Durometer
- ✦ Custom Materials and Cross Sections Available



Part Number	Width W	Height H	Bore B
SO-2-2-1	2	2	1
SO-4-4-2	4	4	2
SO-6-6-3	6	6	3
SO-8-8-4	8	8	4
SO-10-10-5	10	10	5
SO-12-12-6	12	12	6
SO-14-14-7	14	14	7
SO-16-16-8	16	16	8
SO-18-18-9	18	18	9
SO-20-20-10	20	20	10

All Measurements in Inches

Quality Pacific Manufacturing, Inc., P.O. Box 70520 Richmond, CA, USA 94807

☎ 510-233-2310

🌐 www.pacificmarine.net

✉ info@pacificmarine.net



PACIFIC MARINE & INDUSTRIAL

MANUFACTURING ◊ DISTRIBUTION ◊ SERVICE

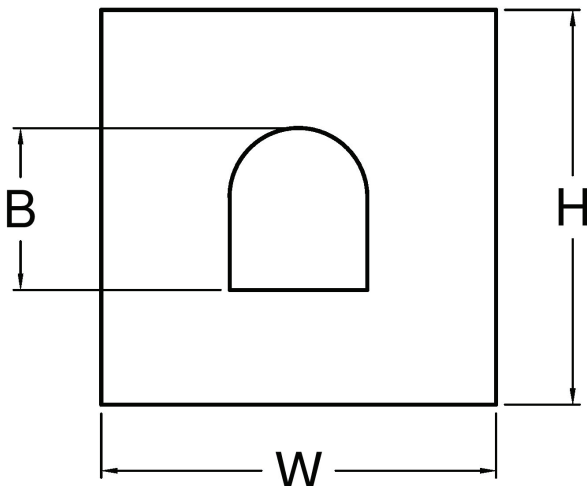
EXTRUDED RUBBER FENDERS

SD SERIES - SQUARE WITH D BORE



FENDER FEATURES

- ✦ Cross Section Sizes Per Chart Below
- ✦ Cut To Length as Desired
- ✦ Maximum Length: 20 Feet in Most Cases
- ✦ Pre Drilled Mounting Holes if Desired
- ✦ Pre Curved to Match Radius if Desired
- ✦ High Quality Black or Non Marking Grey EPDM
- ✦ Standard Hardness of 75 Durometer
- ✦ Custom Materials and Cross Sections Available



Part Number	Width W	Height H	Bore B
SD-2-2-11	2	2	1 x 1
SD-4-4-22	4	4	2 x 2
SD-5-5-2525	5	5	2 1/2 x 2 1/2
SD-6-6-33	6	6	3 x 3
SD-8-8-44	8	8	4 x 4
SD-10-10-55	10	10	5 x 5
SD-12-12-66	12	12	6 x 6
SD-14-14-77	14	14	7 x 7
SD-16-16-88	16	16	8 x 8
SD-18-18-99	18	18	9 x 9
SD-20-20-1010	20	20	10 x 10

All Measurements in Inches

Quality Pacific Manufacturing, Inc., P.O. Box 70520 Richmond, CA, USA 94807

☎ 510-233-2310

🌐 www.pacificmarine.net

✉ info@pacificmarine.net



PACIFIC MARINE & INDUSTRIAL

MANUFACTURING ◊ DISTRIBUTION ◊ SERVICE

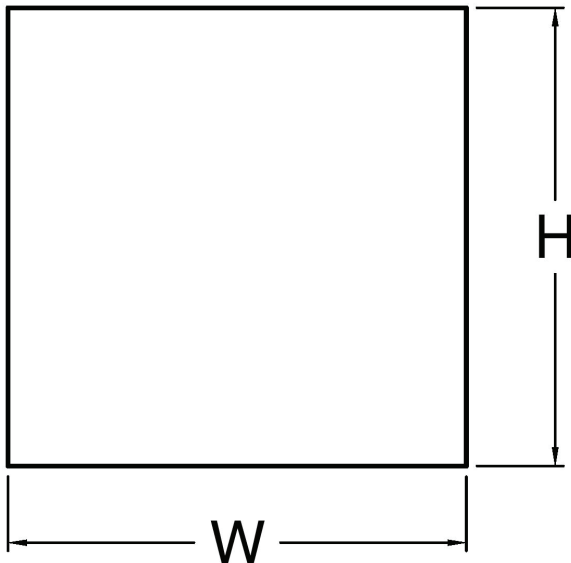
EXTRUDED RUBBER FENDERS

SN SERIES - SQUARE WITH NO BORE



FENDER FEATURES

- ✦ Cross Section Sizes Per Chart Below
- ✦ Cut To Length as Desired
- ✦ Maximum Length: 20 Feet in Most Cases
- ✦ Pre Drilled Mounting Holes if Desired
- ✦ Pre Curved to Match Radius if Desired
- ✦ High Quality Black or Non Marking Grey EPDM
- ✦ Standard Hardness of 75 Durometer
- ✦ Custom Materials and Cross Sections Available



Part Number	Width W	Height H
SN-2-2	2	2
SN-4-4	4	4
SN-6-6	6	6
SN-8-8	8	8
SN-10-10	10	10
SN-12-12	12	12
SN-14-14	14	14
SN-16-16	16	16
SN-18-18	18	18
SN-20-20	20	20

All Measurements in Inches

Quality Pacific Manufacturing, Inc., P.O. Box 70520 Richmond, CA, USA 94807

📞 510-233-2310

🌐 www.pacificmarine.net

✉ info@pacificmarine.net



PACIFIC MARINE & INDUSTRIAL

MANUFACTURING ◊ DISTRIBUTION ◊ SERVICE

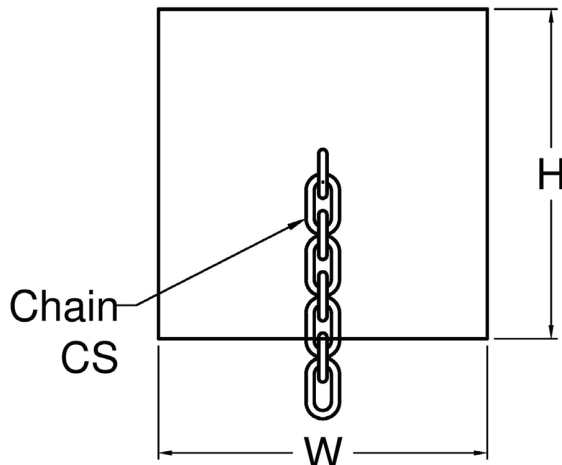
EXTRUDED RUBBER FENDERS

SC SERIES - SQUARE WITH CHAIN



FENDER FEATURES

- ✦ Cross Section Sizes Per Chart Below
- ✦ Cut To Length as Desired
- ✦ Maximum Length: 20 Feet in Most Cases
- ✦ Pre Drilled Mounting Holes if Desired
- ✦ Pre Curved to Match Radius if Desired
- ✦ High Quality Black or Non Marking Grey EPDM
- ✦ Standard Hardness of 75 Durometer
- ✦ Custom Materials and Cross Sections Available



Part Number	Width W	Height H	Chain Size CS	Proof Coil Chain Load Limit	Alloy Chain Load Limit
SC-5	5	5	1/3	1750 Lbs	4250 Lbs
SC-5A	5	5	1/3	1750 Lbs	4250 Lbs
SC-6	6	6	3/8	2450 Lbs	6600 Lbs
SC-8	8	8	1/2	4250 Lbs	11250 Lbs
SC-8A	8	8	5/8	6375 Lbs	16500 Lbs
SC-10	10	10	5/8	6375 Lbs	16500 Lbs
SC-12	12	12	5/8	6375 Lbs	16500 Lbs
SC-14	14	14	5/8	6375 Lbs	16500 Lbs

All Measurements in Inches

Quality Pacific Manufacturing, Inc., P.O. Box 70520 Richmond, CA, USA 94807

📞 510-233-2310

🌐 www.pacificmarine.net

✉ info@pacificmarine.net

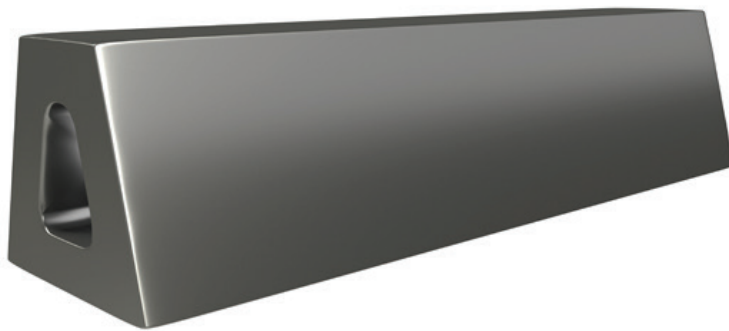


PACIFIC MARINE & INDUSTRIAL

MANUFACTURING ◊ DISTRIBUTION ◊ SERVICE

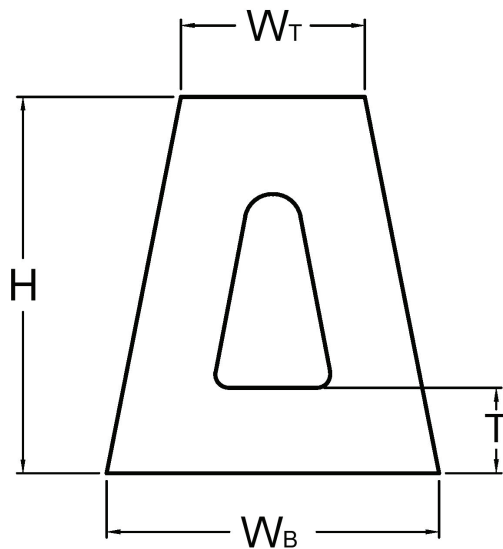
EXTRUDED RUBBER FENDERS

TRAPEZOIDAL R SERIES



FENDER FEATURES

- ✦ Cross Section Sizes Per Chart Below
- ✦ Cut To Length as Desired
- ✦ Maximum Length: 20 Feet in Most Cases
- ✦ Pre Drilled Mounting Holes if Desired
- ✦ Pre Curved to Match Radius if Desired
- ✦ High Quality Black or Non Marking Grey EPDM
- ✦ Standard Hardness of 75 Durometer
- ✦ Custom Materials and Cross Sections Available



Part Number	Width Base W_B	Height H	Width Top W_T	Thickness T
TRS-10	12 3/4	10	5 1/2	2 1/4
TRS-13	16 5/8	13	7 3/8	2 3/4
TRS-15	19 1/8	15	8 5/8	2 3/4
TRS-17	21 5/8	17	9 7/8	2 7/8
TRS-20	23 1/4	20	11 1/4	3 3/4

All Measurements in Inches

Quality Pacific Manufacturing, Inc., P.O. Box 70520 Richmond, CA, USA 94807

☎ 510-233-2310

🌐 www.pacificmarine.net

✉ info@pacificmarine.net



PACIFIC MARINE & INDUSTRIAL

MANUFACTURING ◊ DISTRIBUTION ◊ SERVICE

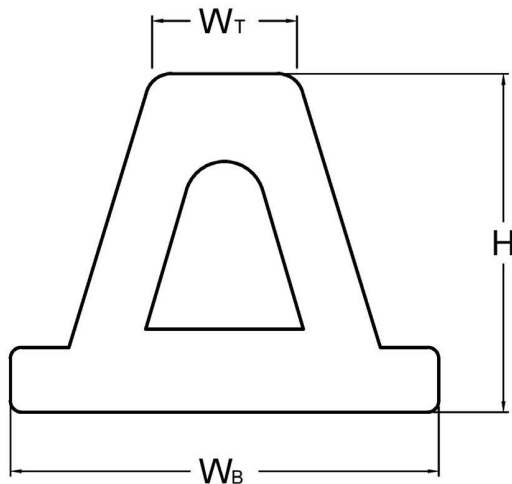
EXTRUDED RUBBER FENDERS

TRAPEZOIDAL W SERIES



FENDER FEATURES

- ✦ Cross Section Sizes Per Chart Below
- ✦ Cut To Length as Desired
- ✦ Maximum Length: 20 Feet in Most Cases
- ✦ Pre Drilled Mounting Holes if Desired
- ✦ Pre Curved to Match Radius if Desired
- ✦ High Quality Black or Non Marking Grey EPDM
- ✦ Standard Hardness of 75 Durometer
- ✦ Custom Materials and Cross Sections Available



Part Number	Width Base W_B	Height H	Width Top W_T
TWS-10	18 1/2	10	5 1/2
TWS-13	21 1/2	13	7 3/8
TWS-15	24 3/4	15	8 5/8

All Measurements in Inches

Quality Pacific Manufacturing, Inc., P.O. Box 70520 Richmond, CA, USA 94807

☎ 510-233-2310

🌐 www.pacificmarine.net

✉ info@pacificmarine.net



PACIFIC MARINE & INDUSTRIAL

MANUFACTURING ◊ DISTRIBUTION ◊ SERVICE

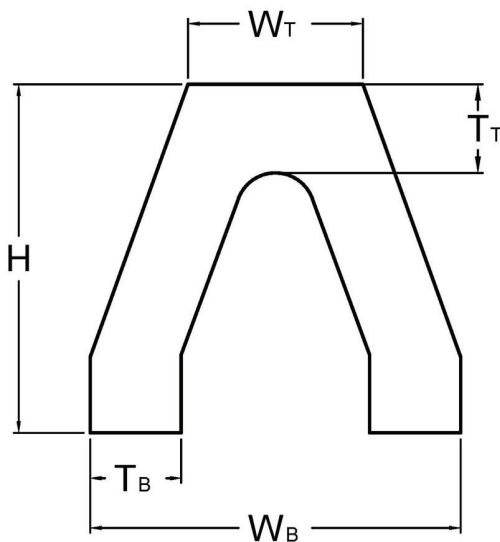
EXTRUDED RUBBER FENDERS

V SERIES ARCH FENDER



FENDER FEATURES

- ✦ Cross Section Sizes Per Chart Below
- ✦ Cut To Length as Desired
- ✦ Maximum Length: 20 Feet in Most Cases
- ✦ Pre Drilled Mounting Holes if Desired
- ✦ Pre Curved to Match Radius if Desired
- ✦ High Quality Black or Non Marking Grey EPDM
- ✦ Standard Hardness of 75 Durometer
- ✦ Custom Materials and Cross Sections Available



Part Number	Height H	Width Top W _T	Width Base W _B	Thickness Base T _B	Thickness Top T _T
VS-12	12	7 1/2	13	3 1/4	3 1/4
VS-16	16	11 7/10	21	5	5
VS-20	20	12	23	5 1/2	5 1/2
VS-24	24	16	28	7	7

All Measurements in Inches

Quality Pacific Manufacturing, Inc., P.O. Box 70520 Richmond, CA, USA 94807

☎ 510-233-2310

🌐 www.pacificmarine.net

✉ info@pacificmarine.net

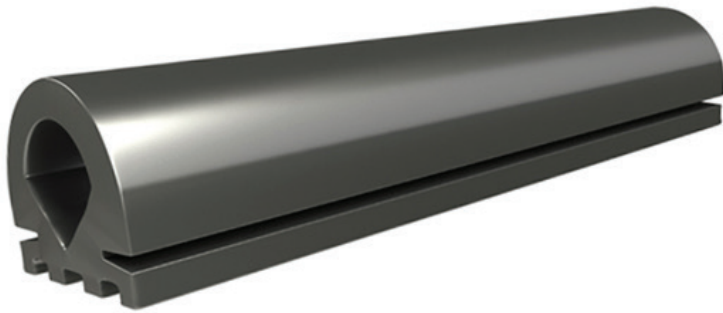


PACIFIC MARINE & INDUSTRIAL

MANUFACTURING ◊ DISTRIBUTION ◊ SERVICE

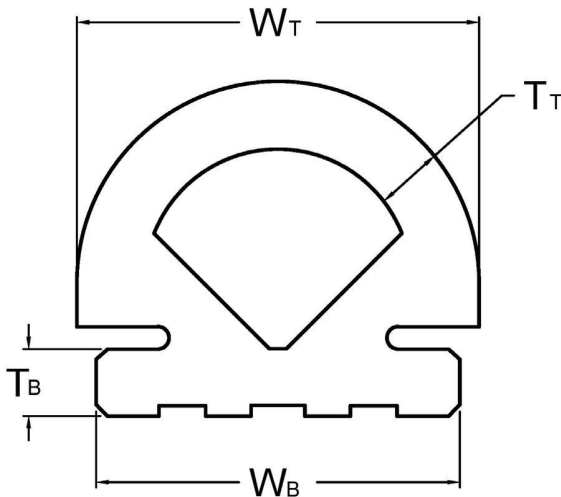
EXTRUDED RUBBER FENDERS

FN SERIES - FAN NOSE



FENDER FEATURES

- ✦ Cross Section Sizes Per Chart Below
- ✦ Cut To Length as Desired
- ✦ Maximum Length: 20 Feet in Most Cases
- ✦ Pre Drilled Mounting Holes if Desired
- ✦ Pre Curved to Match Radius if Desired
- ✦ High Quality Black or Non Marking Grey EPDM
- ✦ Standard Hardness of 75 Durometer
- ✦ Custom Materials and Cross Sections Available



Part Number	Width Base W_B	Thickness Base T_B	Width Top W_T	Thickness Top T_T
FN-2	2 1/2	1/2	3	5/8
FN-4	3 3/4	4/5	4 1/4	3/4
FN-6	5 1/2	1	6	1
FN-8	7 1/4	1 3/16	8	1 1/2
FN-10	9 1/4	1 2/3	10	1 1/2
FN-12	11	2	12	2

All Measurements in Inches

Quality Pacific Manufacturing, Inc., P.O. Box 70520 Richmond, CA, USA 94807

☎ 510-233-2310

🌐 www.pacificmarine.net

✉ info@pacificmarine.net



PACIFIC MARINE & INDUSTRIAL

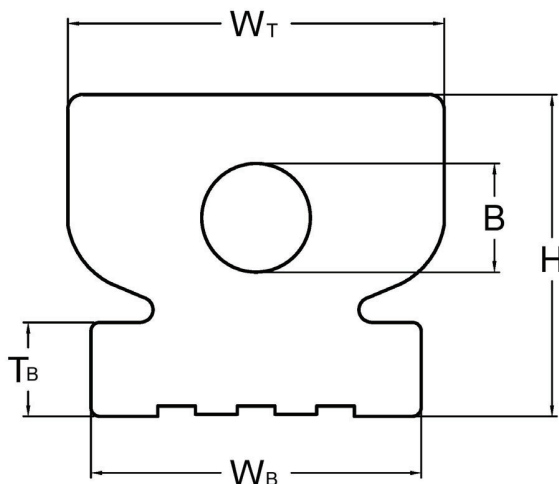
MANUFACTURING ◊ DISTRIBUTION ◊ SERVICE

EXTRUDED RUBBER FENDERS

FH SERIES - FLAT HEAD

FENDER FEATURES

- ✦ Cross Section Sizes Per Chart Below
- ✦ Cut To Length as Desired
- ✦ Maximum Length: 20 Feet in Most Cases
- ✦ Pre Drilled Mounting Holes if Desired
- ✦ Pre Curved to Match Radius if Desired
- ✦ High Quality Black or Non Marking Grey EPDM
- ✦ Standard Hardness of 75 Durometer
- ✦ Custom Materials and Cross Sections Available



Part Number	Width Base W_B	Thickness Base T_B	Width Top W_T	Height H	Bore B
FH-6	6 1/2	1 2/3	7 3/8	6	1 3/4
FH-9	9	2 7/8	9 1/2	7 1/2	3

All Measurements in Inches

Quality Pacific Manufacturing, Inc., P.O. Box 70520 Richmond, CA, USA 94807

☎ 510-233-2310

🌐 www.pacificmarine.net

✉ info@pacificmarine.net

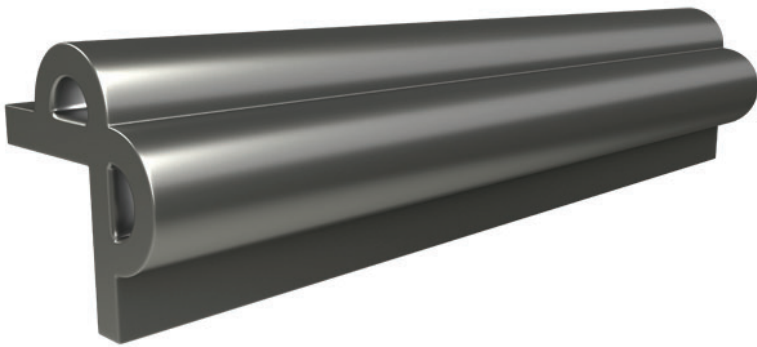


PACIFIC MARINE & INDUSTRIAL

MANUFACTURING ♦ DISTRIBUTION ♦ SERVICE

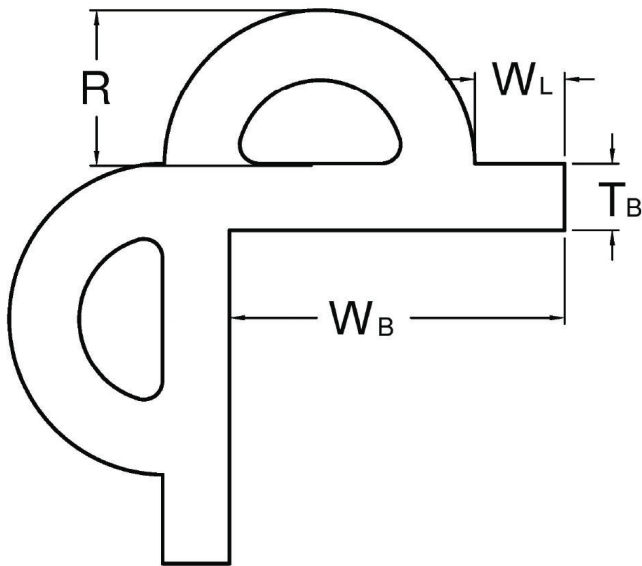
EXTRUDED RUBBER FENDERS

CG SERIES - CORNER GUARD



FENDER FEATURES

- ✦ Cross Section Sizes Per Chart Below
- ✦ Cut To Length as Desired
- ✦ Maximum Length: 20 Feet in Most Cases
- ✦ Pre Drilled Mounting Holes if Desired
- ✦ Pre Curved to Match Radius if Desired
- ✦ High Quality Black or Non Marking Grey EPDM
- ✦ Standard Hardness of 75 Durometer
- ✦ Custom Materials and Cross Sections Available



Part Number	Width Base W_B	Thickness Base T_B	Wing Length W_L	Radius R
CG-6-3	5 1/2	1 1/2	2	3

All Measurements in Inches

Quality Pacific Manufacturing, Inc., P.O. Box 70520 Richmond, CA, USA 94807

☎ 510-233-2310

🌐 www.pacificmarine.net

✉ info@pacificmarine.net