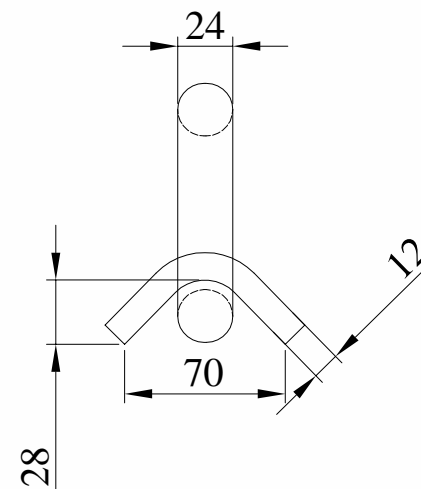
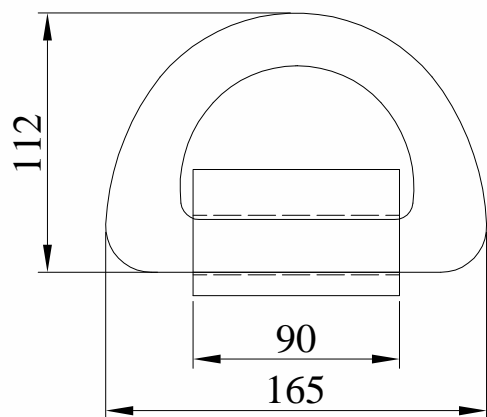
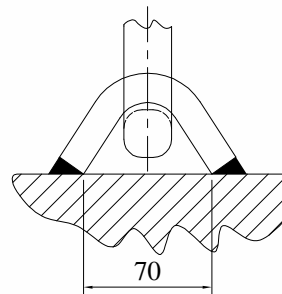


LIFTING POINT 7.2 TONS SWL

PAL-C1-LIFT



Welding Recommendation



LOADS	SHEAR [KN]	TENSION [KN]
BREAKING LOAD	-	360
SWL LIFTING (5:1)	-	72

TOTAL WEIGHT	2.4 KG
MATERIAL	FORGED STEEL
FINISH	HOT DIP GALVANISED