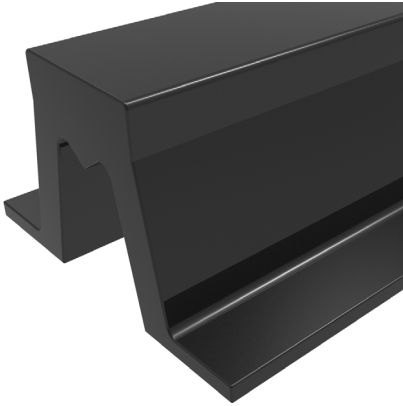




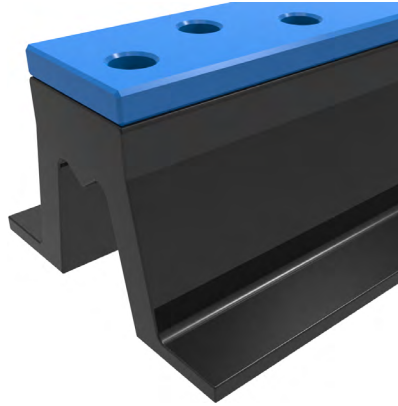
# PACIFIC MARINE & INDUSTRIAL MANUFACTURING ◊ DISTRIBUTION ◊ SERVICE

## ARCH FENDERS

PRODUCT CATALOG 1



PAF SERIES



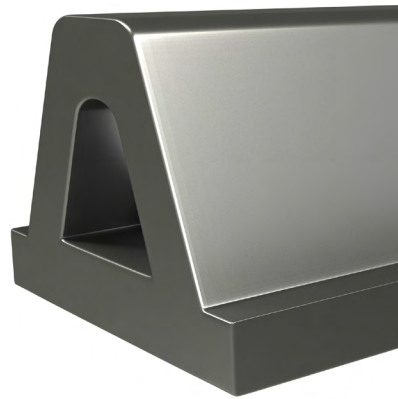
PAFU SERIES



VS SERIES



TRS SERIES



TWS SERIES

- Time Tested Simple Design
- Excellent Wear Characteristics
- Large Range of Sizes and Lengths
- Natural SBR or EPDM Black Rubber
  - Modifications Possible



Quality Pacific Manufacturing, Inc., P.O. Box 70520 Richmond, CA USA 94807



510-233-2310

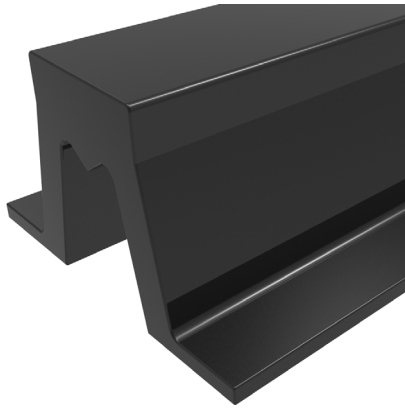


[www.pacificmarine.net](http://www.pacificmarine.net)



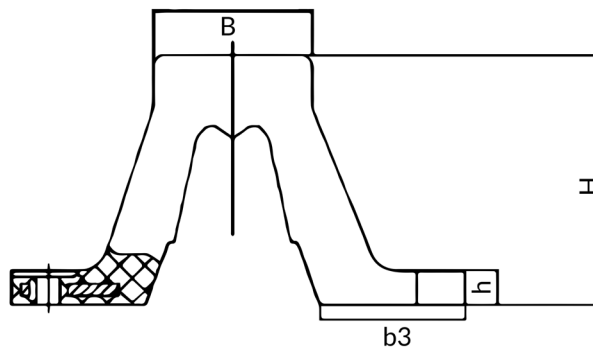
[info@pacificmarine.net](mailto:info@pacificmarine.net)

Copyright © Quality Pacific Manufacturing, Inc.



- Time Tested Simple Design
- Excellent Wear Characteristics
- Steel Reinforced Bolt Holes
- Lengths up to 3,000 Millimeters
- Natural SBR Black Rubber
- Modifications Possible

Fender Dimension	Size			
	H	B	b3	h
PAF-200	200	145	128	30
PAF-250	250	164	160	30
PAF-300	300	225	195	33
PAF-400	400	300	260	40
PAF-500	500	375	325	45
PAF-600	600	450	390	54
PAF-800	800	600	520	72
PAF-1000	1000	750	650	90



PAF Type	Super High Reaction Force RS				High Reaction Force RH				Standard Reaction Force RO				Low Reaction Force RL			
	52.50%		55%		52.50%		55%		52.50%		55%		52.50%		55%	
	R.F	E.A	R.F	E.A	R.F	E.A	R.F	E.A	R.F	E.A	R.F	E.A	R.F	E.A	R.F	E.A
PAF 200 x 1000	170	11	230	14	150	10	200	12	110	8	150	9	75	5	100	6
PAF 250 x 1000	270	28	375	30	208	22	288	23	172	18	239	19	148	16	205	17
PAF 300 x 1000	317.5	40.2	441	43	244	30.4	339	32.34	201.1	24.5	288.1	26.4	173.5	21.56	241.1	23.5
PAF 400 x 1000	423.4	71.5	588	76.4	325.4	54.9	451	58.8	270	45.1	347	48	231	39.2	321	42.1
PAF 500 x 1000	529	110.7	735	118.6	406.7	86	564.5	91.1	337	70.6	468	75.5	289	60.8	402	64.7
PAF 600 x 1000	634	160	881	171.5	488	123.5	678	132.3	403.8	102	560.6	108.8	347	87.2	482	93.1
PAF 800 x 1000	847	284	1176	304.8	651	218.5	904	234	539	181.3	748.7	194	462.6	156	643	167
PAF 1000 x 1000	1058	445	1470	476.3	813	342	1130	366.5	675	283	937	305	578	2430	803	261

Note (1) Tolerance: ± 10%

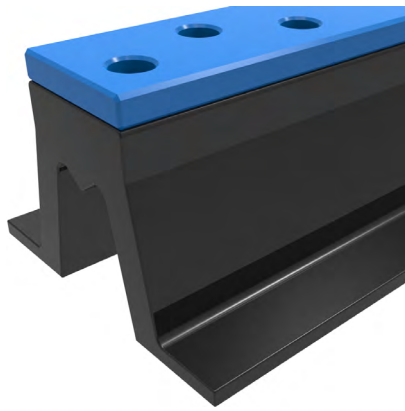
(2) RF-Reaction Force (KN) | EA-Energy Absorbption (KN-M)

(3) Rated Compression: 52.5%      Maximum Compression: 55%

(4) Other performance specifications can be negotiated.

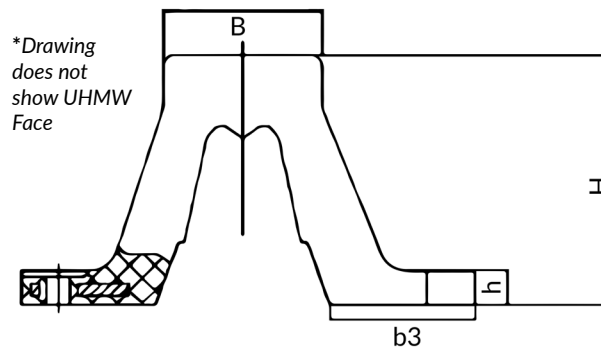
(5) Peformance of other fender lengths can be determined based on a standard length of 1,000km





- Time Tested Simple Design
- Excellent Wear Characteristics
- Steel Reinforced Bolt Holes
- Available With UHMW Face
- Lengths up to 3,000 Millimeters
- Natural SBR Black Rubber
- Modifications Possible

Fender Dimension	Size			
	H	B	b3	h
PAFU-200	200	145	128	30
PAFU-250	250	164	160	30
PAFU-300	300	225	195	33
PAFU-400	400	300	260	40
PAFU-500	500	375	325	45
PAFU-600	600	450	390	54
PAFU-800	800	600	520	72
PAFU-1000	1000	750	650	90



PAFU Type	Super High Reaction Force RS		High Reaction Force RH		Standard Reaction Force RO		Low Reaction Force RL	
	50%							
	R.F	E.A	R.F	E.A	R.F	E.A	R.F	E.A
PAFU 200 x 1000	241	13	208	11	157	8	103	6
PAFU 250 x 1000	257	24	196	19	165	15	144	12
PAFU 300 x 1000	326	35	242	27	200	21	158	16
PAFU 400 x 1000	413	64	316	49	261	41	229	31
PAFU 500 x 1000	511	102	401	78	354	64	269	54
PAFU 600 x 1000	613	133	462	108	386	83	299	71
PAFU 800 x 1000	831	265	621	200	510	150	456	126
PAFU 1000 x 1000	1015	417	788	312	259	262	539	221

Note (1) Tolerance: ± 10%

(2) RF-Reaction Force (KN) | EA-Energy Absorbption (KN-M)

(3) Rated Compression: 52.5%      Maximum Compression: 55%

(4) Other performance specifications can be negotiated.

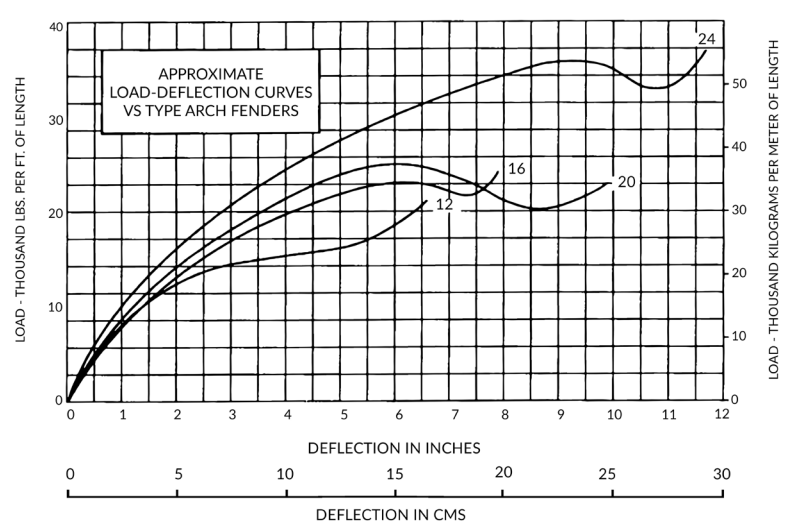
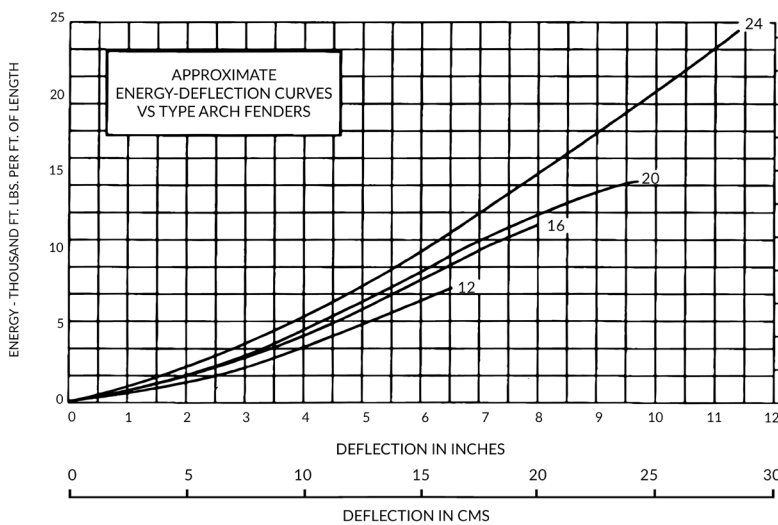
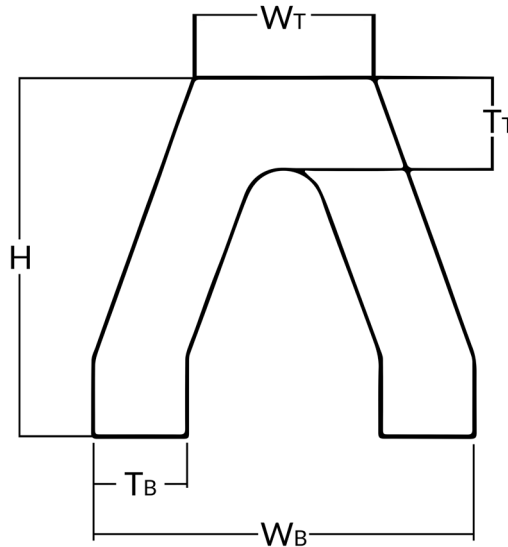
(5) Performance of other fender lengths can be determined based on a standard length of 1,000mm

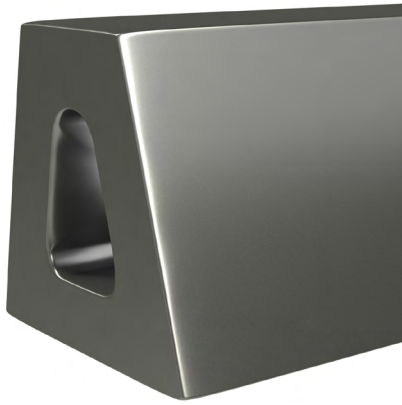




- Time Tested Simple Design
- Excellent Wear Characteristics
- Lengths Up to 20 Feet
- Natural SBR or EPDM Black Rubber
- Modifications Possible

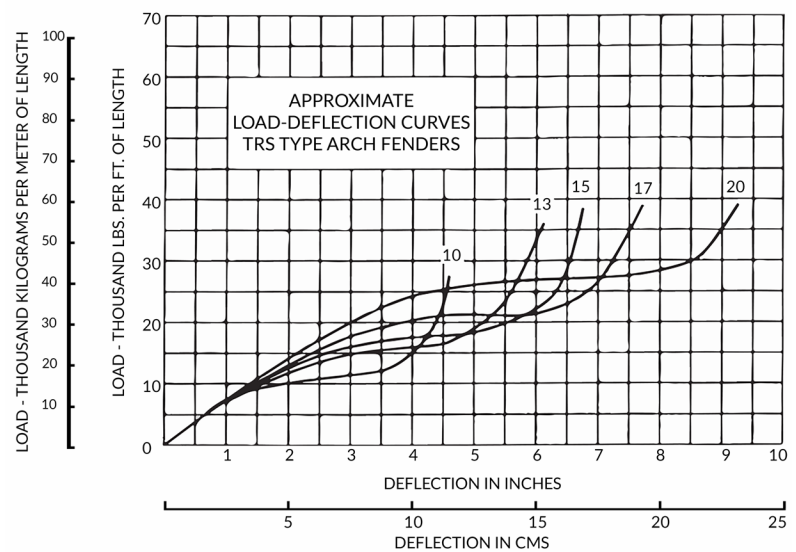
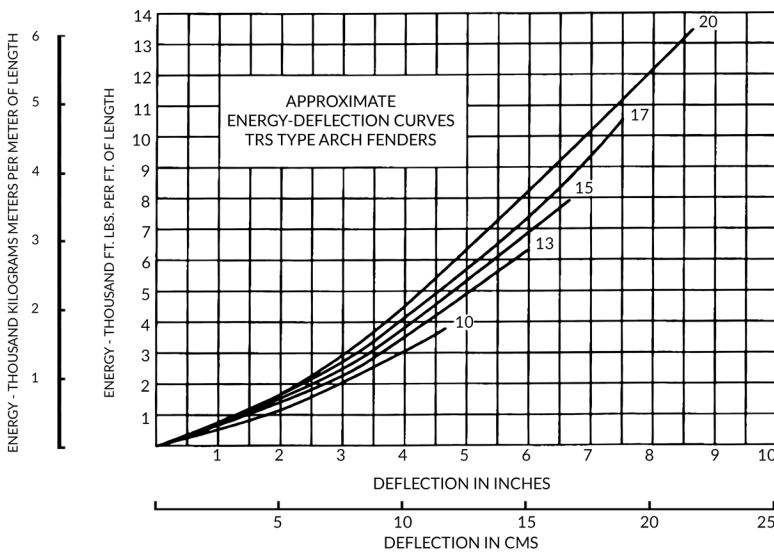
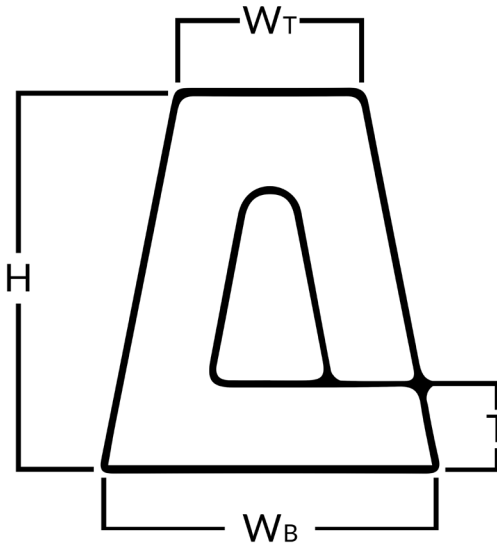
Part Number	Height H	Width Top WT	Width Base WB	Thickness Base TB	Thickness Top TT
VS-12	12	7 1/2	13	3 1/4	3 1/4
VS-16	16	11 3/4	21	5	5
VS-20	20	12	23	5 1/2	5 1/2
VS-24	24	16	28	7	7

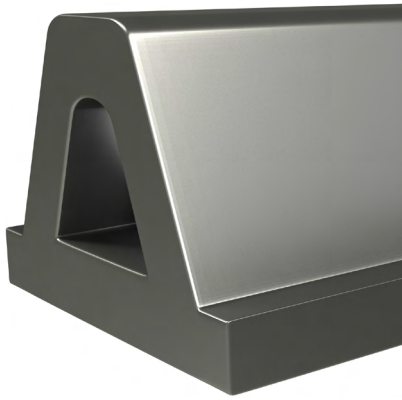




- Time Tested Simple Design
- Excellent Wear Characteristics
- Lengths Up to 20 Feet
- Natural SBR or EPDM Black Rubber
- Modifications Possible

Part Number	Height H	Width Base WB	Width Top WT	Thickness T
TRS-10	10	12 3/4	5 1/2	2 1/4
TRS-13	13	16 5/8	7 3/8	2 3/4
TRS-15	15	19 1/8	8 5/8	2 3/4
TRS-17	17	21 5/8	9 7/8	2 7/8
TRS-20	20	23 1/4	11 1/4	3 3/4





- Time Tested Simple Design
- Excellent Wear Characteristics
- Lengths Up to 20 Feet
- Natural SBR or EPDM Black Rubber
- Modifications Possible

Part Number	Height H	Width Base WB	Width Top WT
TWS-10	10	18 1/2	5 1/2
TWS-13	13	21 1/2	7 3/8
TWS-15	15	24 3/4	8 5/8

