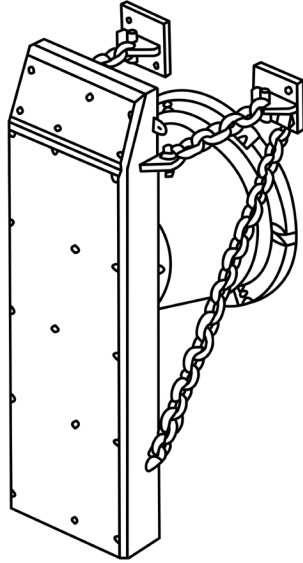




# PACIFIC MARINE & INDUSTRIAL MANUFACTURING ♦ DISTRIBUTION ♦ SERVICE

## PANEL FENDER SYSTEMS

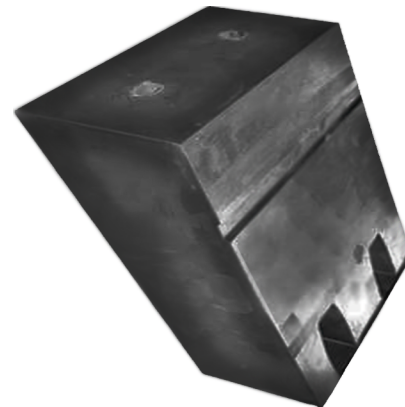
PRODUCT CATALOG 1



PSC SUPER CELL SERIES



PCF CONE FENDER SERIES



PLF LEG FENDER SERIES

- Fender Element or Complete Panel Fender System
- Replacement Elements for Other Brands At Cost Savings
  - Range of Energy Absorption and Reaction Forces
    - Large Range of Fender Element Sizes
  - Large Range of Front Panel Size and Design
  - Quoted Based On Your Project Needs



Quality Pacific Manufacturing, Inc., P.O. Box 70520 Richmond, CA USA 94807



510-233-2310



[www.pacificmarine.net](http://www.pacificmarine.net)



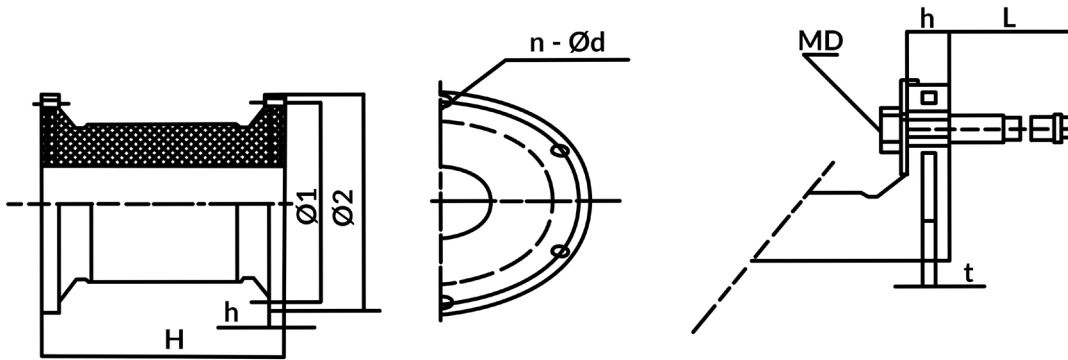
[info@pacificmarine.net](mailto:info@pacificmarine.net)

Copyright © Quality Pacific Manufacturing, Inc.



- Fender Element or Complete Panel Fender System
- Replacement Elements for Other Brands At Cost Savings
- Front Panel Size and Design As Required
- Range of Energy Absorption and Reaction Forces
- Ideal for Berthing Large Vessels
- Long Lasting Design
- Easy Installation

Part Number	H	h	Ø 1	Ø 2	n	Ø d	M D	t	L	Weight (kg)
PSC-500	500	25	550	650	4	32	24	12	300	111
PSC-630	630	30	700	840	4	39	30	14	330	230
PSC-800	800	30	900	1050	6	40	32	14	360	412
PSC-1000	1000	35	1100	1300	6	47	39	18	430	825
PSC-1150	1150	40	1300	1500	6	50	42	22	500	1210
PSC-1250	1250	45	1450	1650	6	53	45	22	500	1500
PSC-1450	1450	47	1650	1850	6	61	52	26	570	2310
PSC-1600	1600	50	1800	2000	8	61	52	28	570	3030
PSC-1700	1700	55	1900	2100	8	66	56	30	620	3700
PSC-2000	2000	55	2000	2200	8	74	64	32	700	5030
PSC-2250	2250	60	2300	2550	10	74	64	36	700	7500
PSC-2500	2500	70	2700	2950	10	74	64	38	700	10750
PSC-3000	3000	75	3150	3350	12	90	76	40	800	18500



PSC Series	Rated Compression Deflection 52.5%										Max Compression Deflection 55%									
	UH		SH		H		S		L		UH		SH		H		S		L	
	R	E	R	E	R	E	R	E	R	E	R	E	R	E	R	E	R	E	R	E
PSC-500	182	40.2	162	35.6	140	30.1	108	23.4	86.3	17.8	210	42.7	187	37.8	160	32	125	24.9	99	18.9
PSC-630	290	80.4	258	71.6	224	61.7	172	47.1	137.5	38.2	309	85.3	274	75.5	237	66.7	182	50	146.5	40.2
PSC-800	464	163	412	145.2	355	124.6	275	96.1	211	74.5	493	172.6	437	153	378	132	292	102	225	78.4
PSC-1000	737	324	655	287	567	249	436	191	349	153	784	343	696	304	603	264	463	203	372	163
PSC-1150	975	492	865	437	750	379	578	291	462	233	1037	521	920	463	798	401	614	309	491	247
PSC-1250	1153	632	1022	561	886	486	682	374	546	299	1225	669	1087	594	942	516	725	396	581	316
PSC-1450	1551	987	1376	876	1193	760	918	585	735	468	1649	1045	1464	928	1269	804	976	619	781	495
PSC-1600	1888	1326	1676	1177	1453	1020	1117	786	894	628	2007	1405	1781	1247	1544	1080	1189	832	950	665
PSC-1700	2131	1591	1892	1413	1640	1224	1262	941	1009	753	2266	1684	2012	1495	1743	1300	1342	997	1073	798
PSC-2000	2941	2591	2619	2300	2270	1994	1746	1534	1398	1227	3136	2743	2783	2435	2413	2111	1856	1624	1485	1299
PSC-2250	4145	4095	3679	3628	3188	3150	2454	2424	2085	2060	4406	4337	3911	3848	3390	3336	2607	2566	2216	2180
PSC-2500	5118	5618	4543	4987	3937	4322	3028	3325	2574	2826	5441	5949	4829	5280	4182	4576	3220	3520	2737	2992
PSC-3000						5687	7456	4314	5676	3677	4897				6619	7521	5099	6028	4217	5193

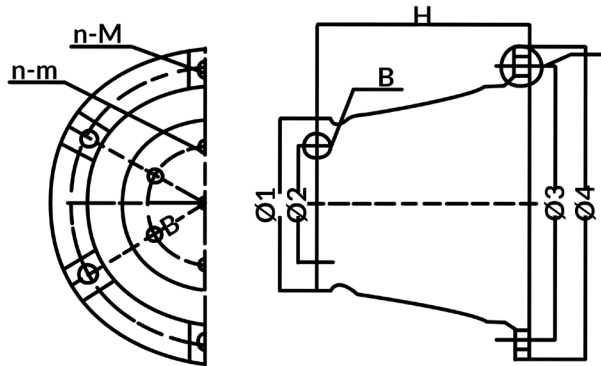
Note (1) Other performance specifications can be negotiated.  
 (2) R-Reaction Force (KN) | E-Energy Absorption (KN-M)  
 (3) UH-Ultra High, SH-Super High, H-High, S-Standard, L-Low  
 (4) Tolerance: ± 10%





- Fender Element or Complete Panel Fender System
- Replacement Elements for Other Brands At Cost Savings
- Front Panel Size and Design As Required
- Range of Energy Absorption and Reaction Forces
- Ideal for Berthing Large Vessels
- Long Lasting Design
- Easy Installation

Part Number	H	Ø 1	Ø 2	Ø 3	Ø 4	n	M	m	h	Weight (kg)
PCF-500	500	425	325	675	750	4	M24	30	25	140
PCF-600	600	510	390	810	900	6	M24	30	27	232
PCF-700	700	595	455	945	1050	6	M30	38	32	395
PCF-800	800	680	520	1080	1200	6	M36	44	36	540
PCF-900	900	765	585	1215	1350	6	M36	44	41	760
PCF-1000	1000	850	650	1350	1500	6	M42	56	45	1015
PCF-1100	1100	935	715	1485	1650	6	M42	50	50	1505
PCF-1150	1150	998	750	1550	1725	6	M42	56	52	1600
PCF-1200	1200	1020	780	1620	1800	8	M42	50	54	1960
PCF-1300	1300	105	845	1755	1950	8	M48	60	59	2400
PCF-1400	1400	1190	930	1890	2100	8	M48	60	66	3060
PCF-1600	1600	1360	1060	2160	2400	8	M48	70	72	4600
PCF-1800	1800	1530	1190	2430	2700	10	M56	76	78	6600



PCF Series	Rated Compression Deflection 70%								Max Compression Deflection 72.5%							
	SH		H		S		L		SH		H		S		L	
	R	E	R	E	R	E	R	E	R	E	R	E	R	E	R	E
PCF-500	335	79	268	63	200	47	165	37	380	90	311	70	232	50	193	41
PCF-600	480	157	382	127	283	94	225	75	542	161	429	129	319	104	258	85
PCF-700	652	235	522	181	384	150	308	120	691	243	568	192	426	154	341	124
PCF-800	882	388	706	294	502	224	402	179	930	380	833	316	576	252	428	208
PCF-900	1078	494	862	399	635	306	508	255	1189	517	957	431	703	334	558	270
PCF-1000	1339	669	1078	541	784	437	628	350	1507	735	1213	588	882	478	698	380
PCF-1100	1430	830	1146	650	927	495	800	408	1570	865	1259	681	1019	527	833	432
PCF-1150	1764	1029	1392	882	1038	666	830	532	1985	1103	1593	938	1152	717	919	588
PCF-1200	1846	1093	1496	952	1106	705	890	560	2045	1149	1665	998	1227	739	985	587
PCF-1300	2125	1585	1705	1310	1320	1043	1125	750	2312	1640	1900	1360	1537	1077	1200	800
PCF-1400	2255	1686	1804	1349	1443	1079	1150	860	2506	1756	2005	1405	1604	1124	1278	896
PCF-1600	3024	2419	2268	1935	1814	1548	1418	1234	3150	2520	2520	2016	2016	1613	1575	1285
PCF-1800	3750	3538	3000	2830	2401	2264	1912	1804	4166	3686	3333	2948	2667	2359	2125	1880

Note (1) Other performance specifications can be negotiated.

(2) R-Reaction Force (KN) | E-Energy Absorption (KN-M)

(3) SH-Super High, H-High, S-Standard, L-Low

(4) Tolerance: ± 10%



## PACIFIC MARINE & INDUSTRIAL



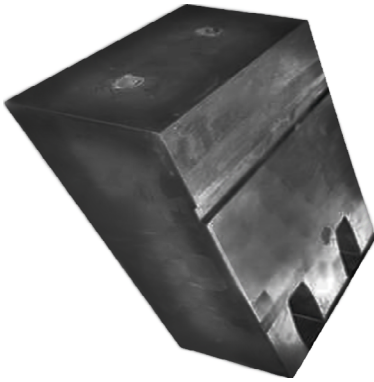
510-233-2310



www.pacificmarine.net



info@pacificmarine.net

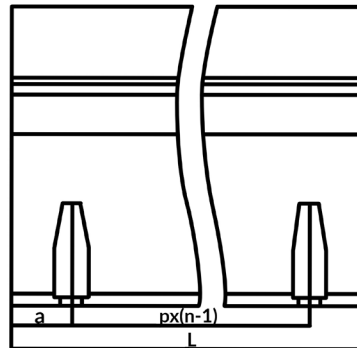
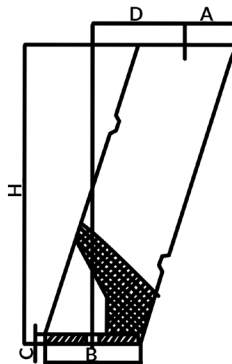


- Fender Element or Complete Panel Fender System
- Replacement Elements for Other Brands At Cost Savings
- Front Panel Size and Design As Required
- Range of Energy Absorption and Reaction Forces
- Ideal for Berthing Large Vessels
- Long Lasting Design
- Easy Installation

Part Number	H	A	B	C	D	L	a	p	n	Md
PLF-300	300	47	94	15	94	2000	250	500	4	M20
PLF-400	400	63	125	17	124	2000	250	500	4	M24
PLF-500	500	87	158	20	142	2000	250	500	4	M30
PLF-550	550	87	172	20	170	2000	250	500	4	M30
PLF-600	600	87	188	20	199	2000	250	500	4	M30
PLF-750	750	118	235	26	230	2000	250	500	4	M36
PLF-800	800	129	250	26	240	2000	250	500	4	M36
PLF-1000	1000	162	322	31	310	2000	250	500	4	M42
PLF-1250	1250	202	401	36	388	2000	250	500	4	M48
PLF-1450	1450	228	454	41	454	2000	250	500	4	M48
PLF-1600	1600	257	500	50	480	2000	250	500	4	M56

Note (1) Standard Fender length is 900, 1000, 1500, 2000mm

(2) Other specifications can be manufactured upon buyer's request



PLF Series	Rated Compression Deflection (%)	Standard Reaction Force RO		Super High Reaction Force RH		Tolerance (%)
		Reaction Force (KN)	Energy Absorption (KN-M)	Reaction Force (KM)	Energy Absorption (KN-M)	
PLF-300	57.5	110	15	161	22	± 10%
PLF-400		150	27	214	39	
PLF-500		187	43	267	61	
PLF-550		206	52	294	75	
PLF-600		224	62	320	89	
PLF-750		282	96	402	137	
PLF-800		299	110	428	157	
PLF-1000		374	172	534	245	
PLF-1250		467	268	667	383	
PLF-1450		543	361	775	516	
PLF-1600		299	440	855	628	

Note (1) Performance based on 1000mm fender length





PACIFIC MARINE & INDUSTRIAL



510-233-2310



www.pacificmarine.net



info@pacificmarine.net