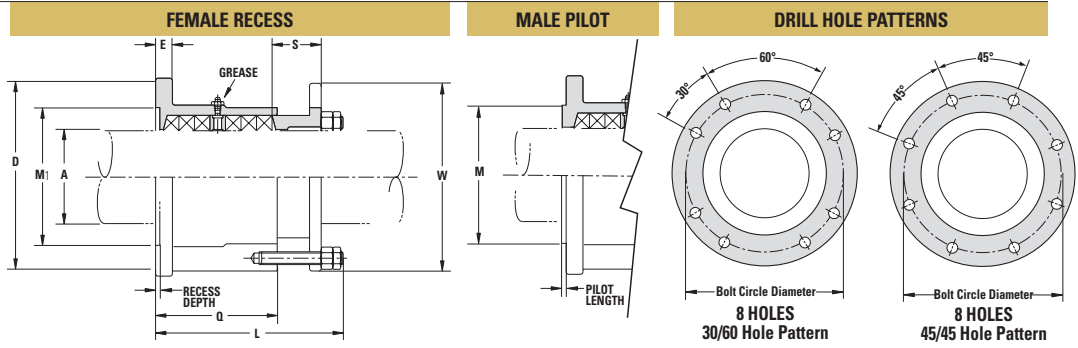
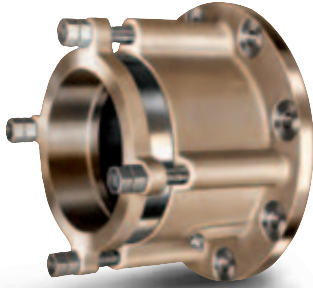


Forward Stern Tube Stuffing Boxes

Model 1790

Grease Service



MALE PILOT / FEMALE RECESS DIMENSIONS	For Shaft Diameter Size	Male Pilot	Female Recess
	2-1/2" - 5-3/4"	3/16"	3/16"
	6" - 15"	3/8"	1/4"

SPECIFY WHEN ORDERING:

Model Number: Alloy: Bronze (standard) or Aluminum **Shaft Diameter:** In Inches or Millimeters **Configurations:** Male Pilot or Female Recess

O.D. Shaft or Sleeve Journal	CODE	Flange Diameter	Flange Thickness	Male Pilot Diameter	Female Recess Diam.	Length	Overall Length	Gland Length	Gland Flange Diameter	Packing O.D.	Packing Size	No. of Rings	No. of Holes	Drill Size	Bolt Circle	Hole Spacing
A	D	E	M	M1	Q	L	S	W	Packing			Drilling Information				
3 76.20	0300	7 -1/2 190.50	7/16 11.11	-	4 -3/4 120.65	4 -1/8 104.78	6 -5/16 160.34	1 -7/16 36.51	7 177.80	4 101.60	1/2 12.70	6	8	11/16 17.46	6 -1/4 158.75	30/60
3 -1/4 82.55	0314	7 -1/2 190.50	7/16 11.11	-	4 -3/4 120.65	4 -1/8 104.78	6 -5/16 160.34	1 -7/16 36.51	7 177.80	4 -1/4 107.95	1/2 12.70	6	8	11/16 17.46	6 -1/4 158.75	30/60
3 -1/2 88.90	0312	8 -1/8 206.38	5/8 15.88	4 -1/2 114.30	5 -1/4 133.35	4 -1/8 104.78	6 -1/2 165.10	1 -5/8 41.28	7 -5/8 193.68	4 -1/2 114.30	1/2 12.70	6	8	11/16 17.46	6 -3/4 171.45	30/60
3 -3/4 95.25	0334	8 -1/8 206.38	5/8 15.88	-	5 -1/4 133.35	4 -1/8 104.78	6 -1/2 165.10	1 -5/8 41.28	7 -5/8 193.68	4 -3/4 120.65	1/2 12.70	6	8	11/16 17.46	6 -3/4 171.45	30/60
4 101.60	0400	8 -5/8 219.08	5/8 15.88	5 -1/2 139.70	5 -3/4 146.05	4 -1/8 104.78	6 -1/2 165.10	1 -5/8 41.28	8 -1/8 206.38	5 127.00	1/2 12.70	6	8	11/16 17.46	7 -1/4 184.15	30/60
4 -1/4 107.95	0414	8 -5/8 219.08	5/8 15.88	5 -1/2 139.70	5 -3/4 146.05	4 -1/8 104.78	6 -1/2 165.10	1 -5/8 41.28	8 -1/8 206.38	5 -1/4 133.35	1/2 12.70	6	8	11/16 17.46	7 -1/4 184.15	30/60
4 -1/2 114.3	0412	9 -3/8 238.13	13/16 20.64	6 -1/8 155.58	6 -1/2 165.10	5 127.00	7 -5/8 193.68	1 -7/8 47.63	8 -7/8 225.43	5 -3/4 146.05	5/8 15.88	6	8	11/16 17.46	8 203.20	30/60
4 -3/4 120.65	0434	9 -3/8 238.13	13/16 20.64	6 -1/8 155.58	6 -1/2 165.10	5 127.00	7 -5/8 193.68	1 -7/8 47.63	8 -7/8 225.43	6 152.40	5/8 15.88	6	8	11/16 17.46	8 203.20	30/60
5 127.00	0500	10 -1/8 257.18	13/16 20.64	6 -1/2 165.10	7 -1/4 184.15	5 -7/8 149.23	9 -1/4 234.95	2 -3/8 60.33	9 -5/8 244.48	6 -1/2 165.10	3/4 19.05	6	8	11/16 17.46	8 -3/4 222.25	30/60
5 -1/4 133.35	0514	10 -1/8 257.18	13/16 20.64	6 -1/2 165.10	7 -1/4 184.15	5 -7/8 149.23	9 -1/4 234.95	2 -3/8 60.33	9 -5/8 244.48	6 -3/4 171.45	3/4 19.05	6	8	11/16 17.46	8 -3/4 222.25	30/60
5 -1/2 139.70	0512	10 -5/8 269.88	13/16 20.64	7 -1/2 190.50	7 -3/4 196.85	5 -7/8 149.23	9 -1/4 234.95	2 -3/8 60.33	10 -1/8 257.18	7 177.80	3/4 19.05	6	8	11/16 17.46	9 -1/4 234.95	30/60
5 -3/4 146.45	0534	10 -5/8 269.88	13/16 20.64	7 -1/2 190.50	7 -3/4 196.85	5 -7/8 149.23	9 -1/4 234.95	2 -3/8 60.33	10 -1/8 257.18	7 -1/4 184.15	3/4 19.05	6	8	11/16 17.46	9 -1/4 234.95	30/60
6 152.40	0600	11 -3/8 288.93	13/16 20.64	8 203.20	8 203.20	6 152.40	10 254.00	3 76.20	11 -1/8 282.58	7 -1/2 190.50	3/4 19.05	6	8	11/16 17.46	10 -1/8 257.18	30/60
6 -1/4 158.75	0614	11 -3/8 288.93	13/16 20.64	8 203.20	8 203.20	6 152.40	10 254.00	3 76.20	11 -1/8 282.58	7 -3/4 196.85	3/4 19.05	6	8	11/16 17.46	10 -1/8 257.18	30/60
6 -1/2 165.10	0612	13 -1/2 342.90	7/8 22.23	8 -1/2 215.90	8 -5/8 219.08	6 -7/8 174.63	10 -7/8 276.23	3 76.20	12 -1/8 307.98	8 -1/4 209.55	7/8 22.23	6	8	13/16 20.64	11 -3/8 288.93	45/45
6 -5/8 168.28	0658	13 -1/2 342.90	7/8 22.23	-	8 -5/8 219.08	6 -7/8 174.63	10 -7/8 276.23	3 76.20	12 -1/8 307.98	8 -3/8 212.73	7/8 22.23	6	8	13/16 20.64	11 -3/8 288.93	45/45
6 -3/4 171.45	0634	13 -3/4 349.25	7/8 22.23	8 -1/2 215.90	9 228.60	6 -7/8 174.63	10 -7/8 276.23	3 76.20	12 -1/2 317.50	8 -1/2 215.90	7/8 22.23	6	8	13/16 20.64	12 304.80	45/45
6 -7/8 174.63	0678	13 -3/4 349.25	7/8 22.23	-	9 228.60	6 -7/8 174.63	10 -7/8 276.23	3 76.20	12 -1/2 317.50	8 -5/8 219.08	7/8 22.23	6	8	13/16 20.64	12 304.80	45/45
7 177.80	0700	13 -3/4 349.25	7/8 22.23	9 -1/4 234.95	9 228.60	6 -7/8 174.63	10 -7/8 276.23	3 76.20	12 -1/2 317.50	8 -3/4 222.25	7/8 22.23	6	8	13/16 20.64	12 304.80	45/45

Consult factory for sizes larger than 7"