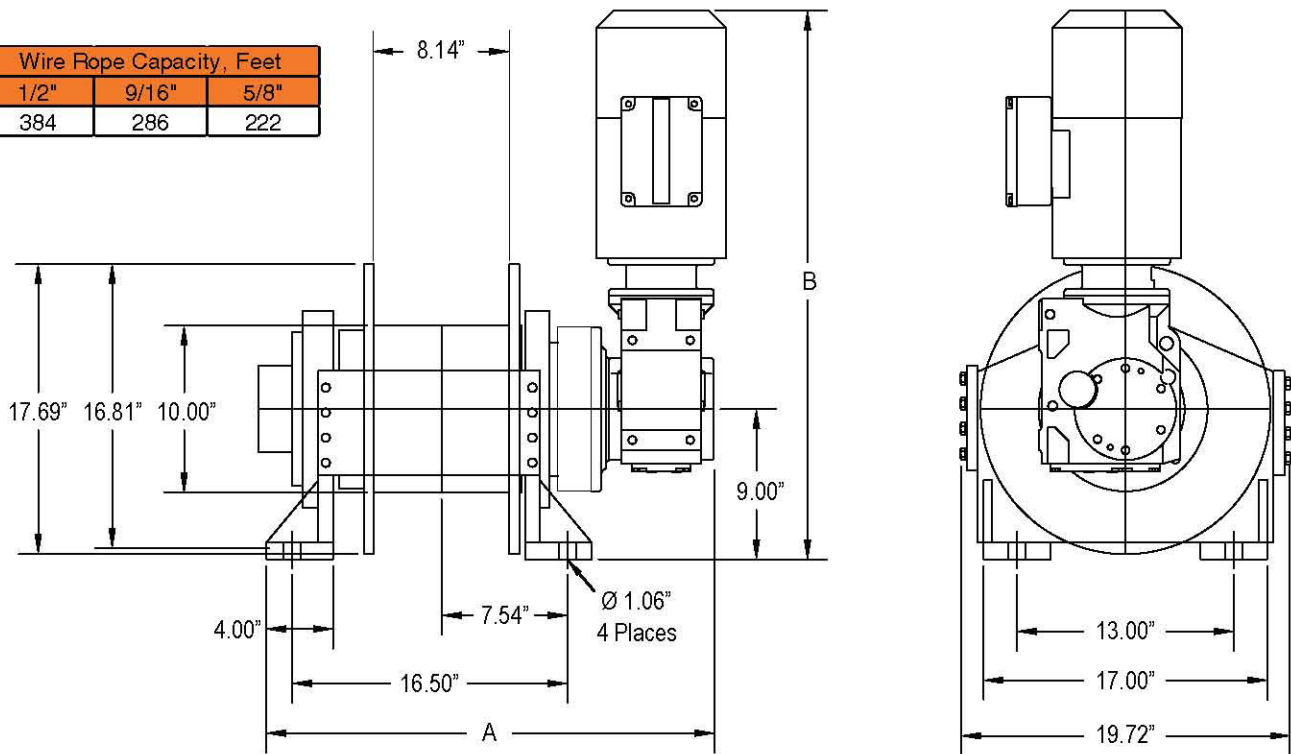


## DIMENSIONAL/PERFORMANCE DATA

Wire Rope Capacity, Feet		
1/2"	9/16"	5/8"
384	286	222



Model	Motor HP	Typical Weight	Line Pull • Line Speed (Calculated with 5/8" wire rope)			Dimensions	
			First Layer	Mean Drum	Full Drum	A <sup>1</sup>	B <sup>1</sup>
WN7500	3.0	570 lbs	7500 lbs • 11 fpm	6400 lbs • 14 fpm	5500 lbs • 16 fpm	28.4"	31.5"
WN7500	5.0	570 lbs	7500 lbs • 19 fpm	6000 lbs • 26 fpm	5200 lbs • 30 fpm	28.4"	31.5"
WN10000	3.0	570 lbs	10000 lbs • 8 fpm	8300 lbs • 11 fpm	7200 lbs • 13 fpm	28.4"	31.5"
WN10000	5.0	598 lbs	10000 lbs • 13 fpm	8700 lbs • 17 fpm	7500 lbs • 21 fpm	28.9"	32.0"
WN15000	3.0	570 lbs	15000 lbs • 6 fpm	11900 lbs • 7 fpm	10300 lbs • 9 fpm	28.4"	31.5"
WN15000	5.0	598 lbs	15000 lbs • 10 fpm	11600 lbs • 13 fpm	10000 lbs • 15 fpm	28.1"	32.0"
WN15000	7.5	629 lbs	15000 lbs • 16 fpm	11000 lbs • 21 fpm	9500 lbs • 24 fpm	29.3"	35.1"
WN20000	3.0	578 lbs	20000 lbs • 5 fpm	14700 lbs • 6 fpm	12700 lbs • 7 fpm	28.6"	31.8"
WN20000	5.0	598 lbs	20000 lbs • 9 fpm	14500 lbs • 11 fpm	12500 lbs • 13 fpm	28.6"	31.8"
WN20000	7.5	629 lbs	20000 lbs • 12 fpm	14600 lbs • 15 fpm	12600 lbs • 18 fpm	29.3'	35.1"
WN20000	10.0	730 lbs	20000 lbs • 16 fpm	14500 lbs • 21 fpm	12500 lbs • 25 fpm	32.0'	37.6"

Performance based on 230/460 3Ø 60 Hz input power; other voltages available

<sup>1</sup> Max dimension shown